

MIRILLA / SIGHT GLASS

MIRILLA TURBULENCIA DOBLE CRISTAL F. GRIS GJL-250 CON BRIDAS PN-16 TURBULENCE SIGHT GLASS DOUBLE WINDOW CAST IRON FLANGED ENDS



TF-SG-CI-F



UTILIZACIÓN / APPLICATION :

Aplicaciones en Industria química, condensado de vapor, industria, etc.
Chemical. steam condensate. industrv. etc.

CARACTERÍSTICAS GENERALES / GENERAL CHARACTERISTICS :

Medidas / Range: DN15 - DN100
Construcción Fundición Gris EN GJL-250/ *Cast iron EN GJL-250*
Cristales Templados / *Tempered glass*
Juntas Fibras / *Gasket Fiber*

NORMATIVAS / STANDARDS :

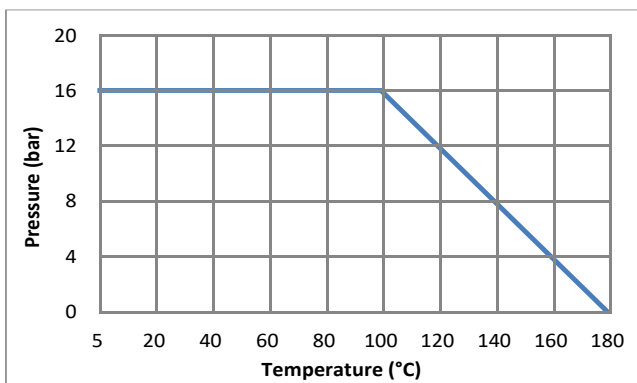
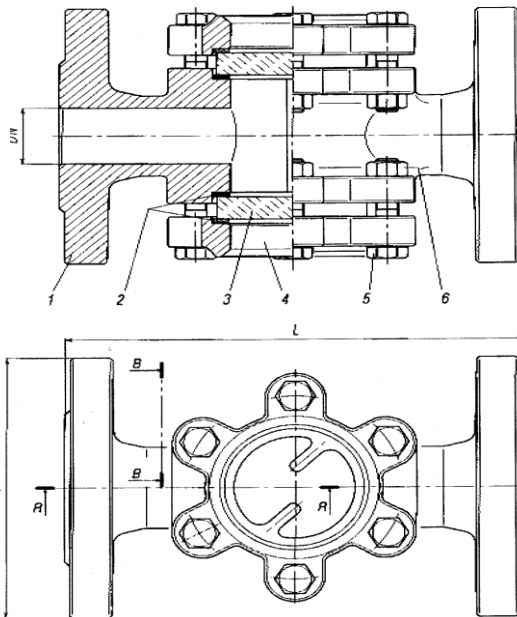
Fabricación / *Manufacture according to ISO 9001 : 2008.*
Directiva CE / *Directive 97/23/EC: DN 15 to 25 : excluded DN 32 to 200 : category II*
Bridas PN-16 RF / *Flanges NP-16 EN1092-2*
Longitud / *Length according to EN 558-1 series 1*

CONDICIONES DE SERVICIO / WORKING CONDITIONS :

Máxima presión de trabajo / *Maximum Working Pressure : 16 bar.*
Temperatura máxima de trabajo / *Maximum Working Temperature : -5 °C / +180 °C.*

MATERIALES / CONSTRUCTION :

| No. | Pieza Part | Material Material |
|-----|-------------------------------------|--|
| 1 | Cuerpo <i>Body</i> | F.Gris GJL-250 <i>Cast iron GJL-250</i> |
| 2 | Junta cristal <i>Gass gasket</i> | Fibras comprimidas <i>Fiber Gasket</i> |
| 3 | Cristales <i>Glass</i> | Cristal Templado <i>Tempered Glass</i> |
| 4 | Tapa <i>Cover</i> | F.Gris GJL-250 <i>Cast iron GJL-250</i> |
| 5 | Tornillo <i>Bolt</i> | Acero 8.8 <i>Steel 8.8</i> |
| 6 | Tuerca <i>Nut</i> | Acero 8.8 <i>Steel 8.8</i> |



REGULATIONS AND STANDARD OF CONSTRUCTION

DIMENSIONES / DIMENSIONS :

| DN ND | L | F | Drillings | Peso Weight |
|----------|-----|-----|-----------|----------------|
| 15 | 130 | 95 | 4 | 2,90 |
| 20 | 150 | 105 | 4 | 3,50 |
| 25 | 160 | 115 | 4 | 4,00 |
| 32 | 180 | 140 | 4 | 6,00 |
| 40 | 200 | 150 | 4 | 6,50 |
| 50 | 230 | 165 | 4 | 9,00 |
| 65 | 290 | 185 | 4 | 15,00 |
| 80 | 310 | 200 | 8 | 17,70 |
| 100 | 350 | 220 | 8 | 24,90 |
| 125 | 400 | 250 | 8 | Consultar |
| 150 | 480 | 285 | 8 | Consultar |
| 200 | 600 | 340 | 12 | Consultar |



Tlf: 67 150 250 Faks: 67 150 251
Mail: post@instrumentteam.no
Web: www.instrumentteam.no