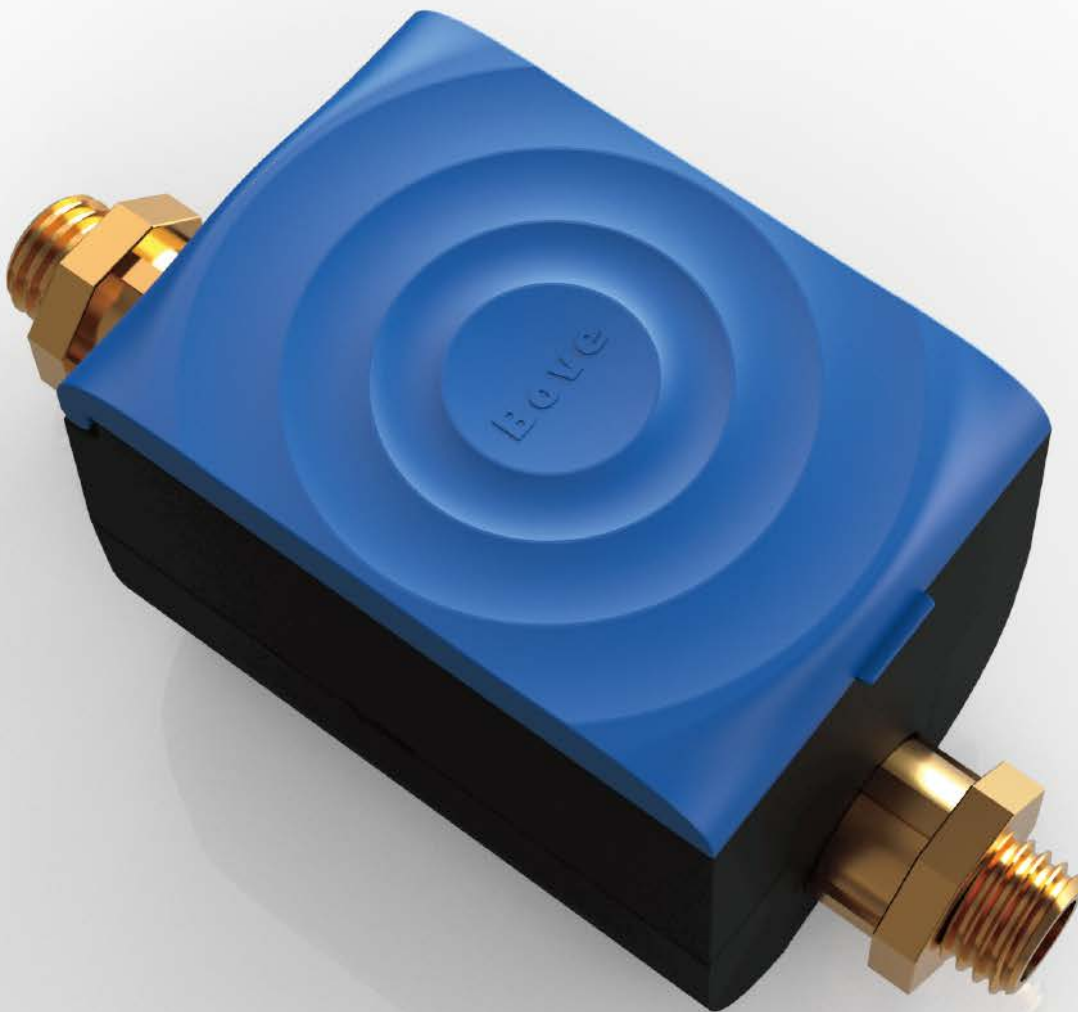


BECO X

Remote Reading Ultrasonic Water Meter, developed for residential application

Qi 0.00625-0.064 m³/h

Supporting Mbus, Rs485, 4-20mA, LoRa, NB-IoT, Sigfox



This time, a next-generation ultrasonic water meter, BECO X, is released after Bove engineers' two years dedication.

A fresh new firmware enabling an overall power consumption lowering by 18 percent. With same battery plan, BECO X offers our customer a longer period measurement on various communications.



Working together with Alpaca-E Remote Meter Reading & Control System, BECO X is able to collect and analyze over millions users' water consuming data. Bove's engineers are able to optimize the meter metrology and communication by utilizing these big data. Utilities also upgrade their water supply network with the help of these water consumption data.



Big but Hale, or Performance Monster?
BECO X satisfy you all.



high temperature



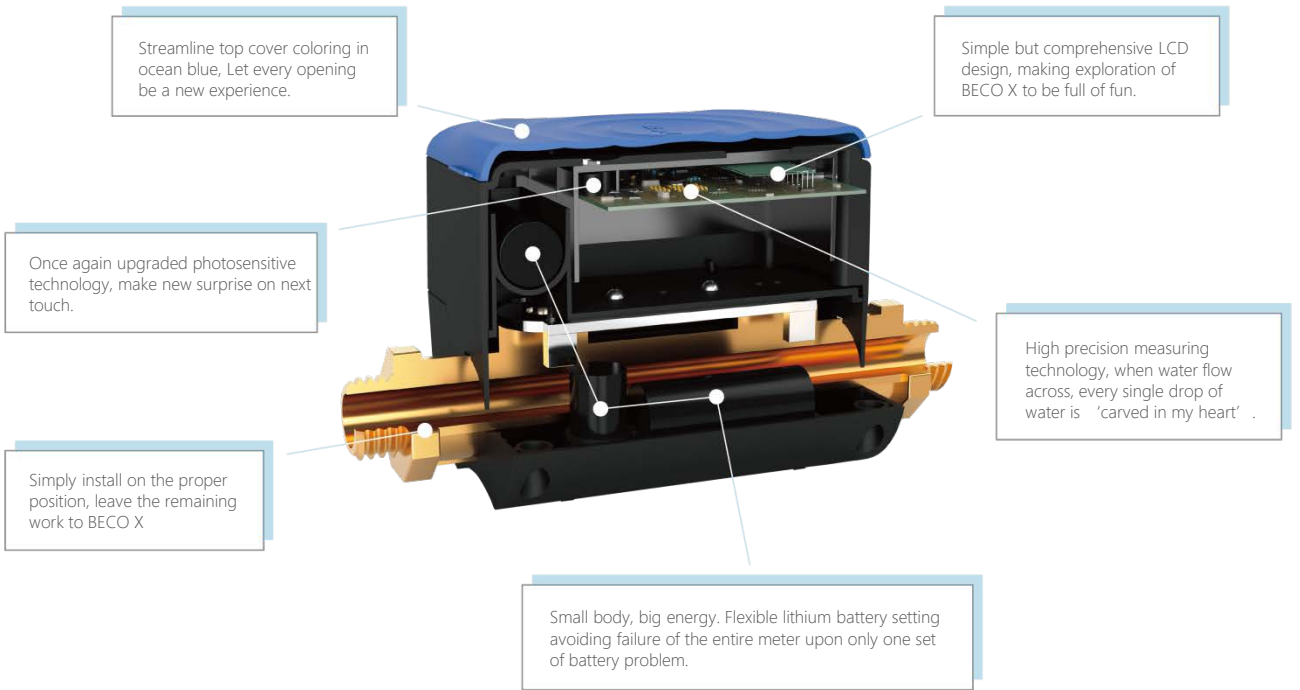
high humidity



UV

'No trouble, no fear' .

We build highly coordinated metering solution for our esteemed customers. At Years after re-calibration, BECO X and BOVE' s B28 VTB series calibration and testing bench working consistently to make BECO X renew like original.



1. Flexible Battery Life Span

10-15 years

BECO X has no moving parts, presents as IP68, and its body is fabricated from durable brass material. This robust design makes the BECO X maintenance-free and highly precise throughout its flexible 10 or 15 years battery life depends upon customers' needs.

2. Battery Replaceable



Battery is able to get replaced in case of failure of battery sets. This action can be treated by professional engineers without any injection on electronic parts.

3. Proof of Humidity, Water and UV.

BECO X is specially designed for extreme complex environment which has high humidity, blood or high UV.

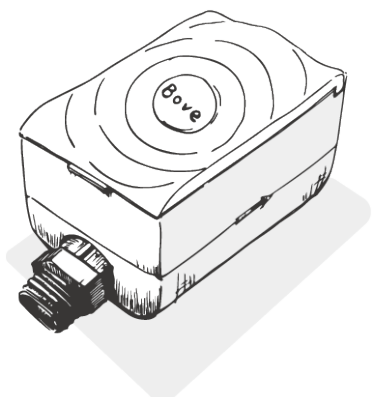
4. IoT Ready

BECO X supports multiple communication interfaces for both wired and wireless which suitable for any type of installation environment, e.g. MBus, RS485 (Modbus), Pulse, LoRaWAN. Leak detection function inside meter help troubleshooting, end-service and saving the most important source of life, water.



5. Multiple Dynamic Range Options (Q3/Q1)

Application for multiple requirements. From R160 to R250 and R400. Able to count every drop of water.

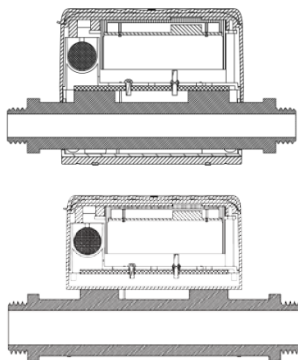


6. Exceptional Industry Design

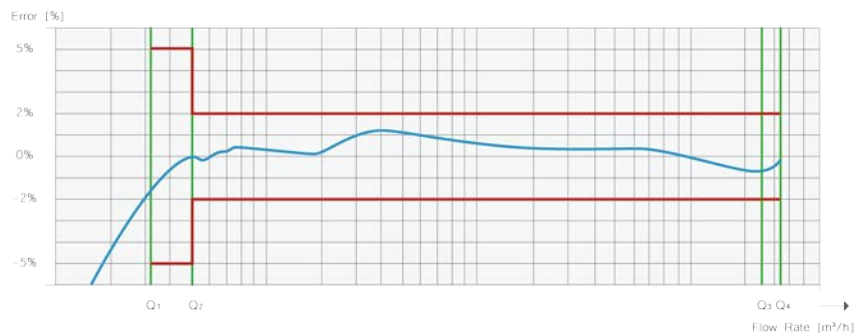
Golden ratio of Length-Width-Height, splendid color assortment with Ocean Blue & Night Sky Black. Anti-dirty enclosure ensures long duration of tidy outlook same as original meter.

◀◀ DIMENSIONS ▶▶

Model	BECO X - 15	BECO X - 20	BECO X - 25	BECO X - 32	BECO X - 40
Pipe Diameter	DN15	DN20	DN25	DN32	DN40
Minimum Flow Rate q_i (m ³ /h)	0.00625	0.01	0.0252	0.04	0.064
Permanent Flow Rate q_p (m ³ /h)	2.5	4.0	6.3	10	16
Maximum Flow Rate q_s (m ³ /h)	3.125	5.0	7.875	12.5	20
Connection	G $\frac{3}{4}$ '	G1'	G1 $\frac{1}{4}$ '	G1 $\frac{1}{2}$ '	G2'
Length (mm)	165	195	225	180	200
Width (mm)	81	81	81	81	81
Height (mm)	100	100	118	128	135
Temperature	Medium Range: 0.1°C.....30/50/70°C (T30 / T50 / T70) • Ambient temperature: 5~55 °C • Storage temperature: -20~60 °C				
Materials	Brass 59-1				
Metrological Class	Class 2				
Maximum Operation Pressure	R125, R160 (upto T70) R250, R400 (upto T50)				
Pressure Loss	1.6 MPa				
Pressure Stage	$\Delta P < 63$ kPa				
Protection Class	PN16				
Battery	IP65/IP68				
Data Storage	3.6VDC lithium battery, 6/10/16 years lifetime optional				
Environmental Requirement	24 months history data				
Interface & Communication	Environmental Class: E1, M1, B				
Installation	• M-Bus • Pulse output (optional) • RS-485 (optional) • LPWAN (LoRa, NB-IOT) (optional) • Sigfox				
Display and Indication	H, V, H/V				
Standard Compliance	• Unit: m ³ / Gallon (optional) • LCD: 8-digit • EN14154 • ISO4064 • OIML R49				



BECO X Ultrasonic Water Meter Accuracy Curve



◀◀ WHY CHOOSE Bove Technology..... ▶▶

When it comes to water flow measurement, Bove is the one of the most excellence. And we want to explain why you should trust us when we say that choosing a Bove products equals choosing reliability.

In our manufacturing plant, you will find a dedicated research and development team that gives us the ability to face your local needs and challenges head-on—regardless of size or requirements. And thanks to our in-house laboratories and highly-skilled engineers, we can develop innovative and user-friendly products faster than ever. A manufacturing capacity reaching millions of units in our plant ensuring on-time delivery, and meanwhile Bove ensures the highest level of quality and reliability through standards such as ISO 9001 and ISO 14001.....

Bove reserves the change of contents without prior notice
Copyright© 2021 Bove Intelligent Technology Co., Ltd